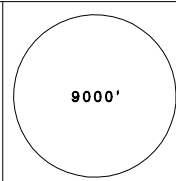
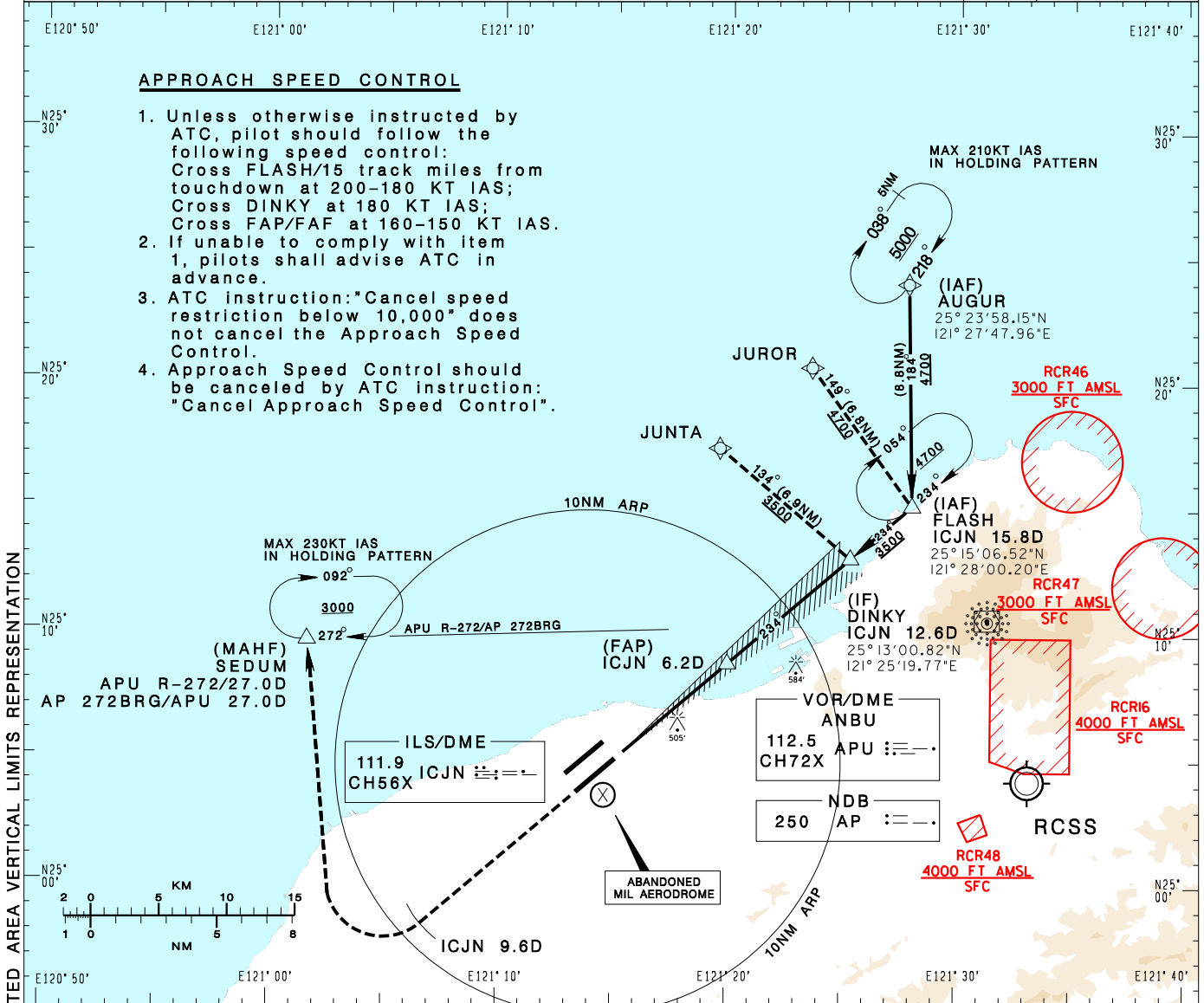


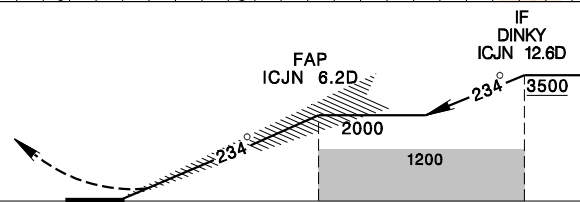
**臺灣桃園國際機場**  
TAIPEI/TAIWAN TAOYUAN INTL AD

RCTP  
ILS RWY23L

TAIPEI APP 125.1 128.5 125.6	TAIPEI TWR 118.7 129.3	ATIS 127.6	 <p>9000'</p> <p>MSA ARP 25NM</p>	
Apt Elev: 108'	Rwy23L DTHR Elev: 96'	Trans Level: FL130		Trans Alt: 11,000'
BEARINGS ARE MAGNETIC; DISTANCES ARE NAUTICAL MILES; ELEVATIONS, HEIGHTS IN FEET				



MISSED APCH:  
CLIMB ON HDG 234 UNTIL ICJN 9.6D,  
THEN TURN RIGHT DIRECT TO SEDUM,  
MAINTAIN 3000 AND HOLD.



MINIMA (OCA IN FT, VIS IN M, OCH IN FT)

CATEGORY	A	B	C	D
STRAIGHT IN	297/800 RVR550 201	309/800 RVR550 213	317/800 RVR550 221	327/800 RVR550 231
STRAIGHT IN (TDZ/CL LGT OUT)	297/800 RVR750 201	309/800 RVR750 213	317/800 RVR750 221	327/800 RVR750 231
STRAIGHT IN (ALS OUT)	297/1200 RVR1200 201	309/1200 RVR1200 213	317/1200 RVR1200 221	327/1200 RVR1200 231
CIRCLING	880/1900 772	930/2800 822	1030/4400 922	1030/4800 922

NOTE  
1. CIRCLING NOT AUTHORIZED  
SOUTHEAST OF RWY 05R/23L.  
2. ATS SURVEILLANCE REQUIRED  
FOR APPROACH TO FLASH AND  
MISSED APCH SEGMENTS.

\*DME REQUIRED.

CHANGES: NEW PAGE NUMBER, UPDATE RESTRICTED AREA VERTICAL LIMITS REPRESENTATION